



XCMG FOR YOUR SUCCESS

# LW1100KV

Wheel Loader



 | [Machmall.com](http://Machmall.com)

Web: [machmall.com](http://machmall.com)  
Tel: +86-516 8773 9797  
E: [machmall@xcmg.com](mailto:machmall@xcmg.com)

## Model Characteristics

LW1100KV is one main model of XCMG V series high-tonnage wheel loader and is leading the domestic industry development. It's rooted in the customers' needs and based on the international R&D platform to thoroughly improve the product reliability, economy, energy-saving, environmental-friendliness, comfort, and maintenance convenience. With heavy-duty design and high firmness and reliability and globally supplied critical parts, this product is extensively applied in the productions of mine, logistics, cement, and steel enterprises.

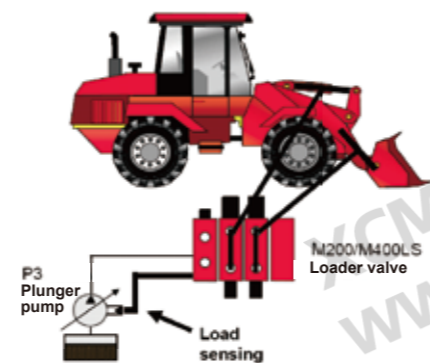
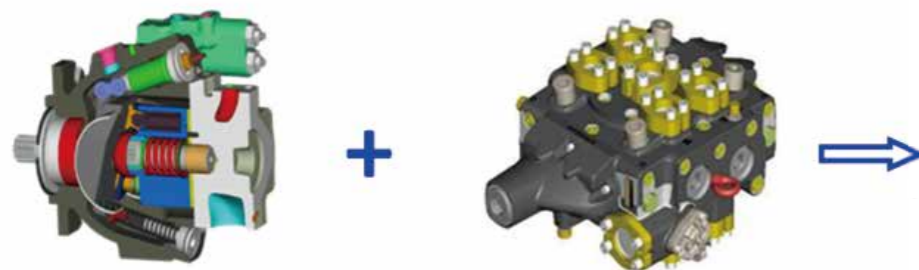
## High Efficiency

### High efficiency drive system

- ▼ The world's leading full-automatic electronic control transmission is equipped, with four-forward and three-reverse gears, automatic/manual mode switchover function, and KD function.

### High efficiency hydraulic system

- ▼ The load-sensing variable technology is adopted to supply pressure and flow depending on the working needs, which reduces the fuel consumption by 15%.
- ▼ The electro-hydraulic proportional control realizes handy operations and greatly improves the working efficiency.



### High-efficiency working device

- ▼ The high-efficiency linkage system is fitted with limit sensing mechanism with angle memory function, featuring higher limiting accuracy and working efficiency.

## Reliability

### Structural parts

- ▼ The super-strong heavy-duty design eliminates partial weaknesses and meets the needs under diversified severe operating conditions with fatigue destruction test of millions of cycles.
- ▼ The robot welding process ensures stable weld quality and high fusion depth.



### Engine

- ▼ The three-stage air filter is designed especially for severe working environment of construction machinery industry.
- ▼ The multi-stage fuel filter ensures good fuel adaptability and guarantees cleanliness of engine system.



### Drive parts

- ▼ The single-turbine three-element torque converter and the full-automatic electronic control AMT transmission feature simple structure and high reliability.
- ▼ The full-automatic electronic control transmission incorporates neutral-gear start protection, gear locking, power shutoff, and malfunction self-diagnosis functions.

### Drive axle

- ▼ The full-hydraulic wet drive axle and the optional differential lock improve the working condition adaptability and remarkably prolong the life of drive axle.
- ▼ The drive axle is equipped with forced heat dissipation system to forcibly cool down the friction plates of wet-type brake and effectively prolong the service life of axle.



## Comfortable

### Comfortable operations

- ▼ The electro-hydraulic proportional control with fingertip operations features high handiness and comfort.
- ▼ The high-performance air-cushioned composite seat works with multi-direction adjustable steering wheel and follow-up control box to meet the operation needs of different drivers.
- ▼ The strong human-machine interactivity for the pedals and controls mitigates the fatigue during long-time operations.
- ▼ The double-pedal brake features intelligent power cutoff, comfortable operations, and high stability.
- ▼ The angle memory function for the working device reduces the collision impact and improves the operation comfort.



### Comfortable driving environment

- ▼ Well insulated against noise, dust, and heat, the full-enclosed integral framework cab creates a healthy driving environment.
- ▼ The panoramic glasses and super-large spherical rearview mirrors ensure a broad vision and easy and safe operations.
- ▼ The utilizable space of the cab is enlarged by 20% and the seats are backward inclinable in large angle to bring about more comfort.
- ▼ The slightly pressurized A/C system with filtration function provides the operator with a comfortable working environment.
- ▼ The graceful and elegant instruments bring about a car-style visual enjoyment.
- ▼ The passageway system of the machine and the emergency exit equipped meet the CE standard.
- ▼ The reversing camera system is equipped to ensure higher reversing safety.



## Economy

### Operation economy

- ▼ The low-speed high-torque T3 engine works together with high capacity torque converter to ensure maximum efficiency and greatly reduce the fuel consumption.
- ▼ The output flow of the pump is adjustable depending on the working needs to avoid high pressure overflow loss and reduce the fuel consumption.
- ▼ The working device with lightweight design can reduce the unnecessary energy consumption and improve the fuel economy during each lifting cycle.
- ▼ Intelligent independent heat dissipation system: By measuring the engine coolant temperature, hydraulic oil temperature, torque converter oil temperature, and air-air intercooler temperature, it realizes the intelligent fan speed control to reduce the fuel consumption.
- ▼ In addition, the replacement volume of hydraulic oil is reduced by 20% compared with the like models.



## Working condition adaptability

- ▼ The enhanced wear-resistance bucket design and V-shaped main blades effectively reduce the piercing resistance and improve the operation efficiency.
- ▼ The optional clamp attachment is available.

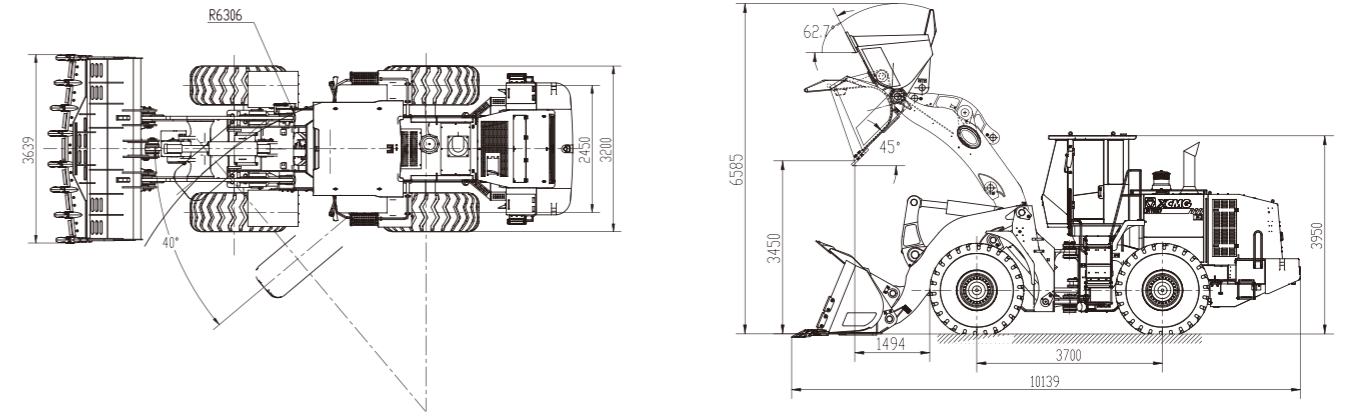


## Convenient maintenances

- ▼ The GPS remote malfunction diagnosis works with exclusive maintenance manual to reduce the user's maintenance cost and help customer for equipment management.
- ▼ The engine hood adopts upturning large door design in large opening angle to ease the daily maintenances.
- ▼ The "one-stop" maintenance can be fulfilled for the engine oil filter, diesel filter, transmission and torque converter filters, and air filter.
- ▼ The centralized pressure measurement eases the services and maintenances.
- ▼ The temperature controlled fan with self-cleaning function is capable of reverse rotation to make the maintenance easier.
- ▼ The central distribution box is installed within the cab, featuring dust and moisture proof and easy services.
- ▼ The automatic lubrication system is equipped to periodically lubricate the piston pins and bushings, reduce the daily maintenance time, and prevent the unexpected shutdown maintenance time due to insufficient lubrication.
- ▼ The full-enclosed wet brake system equipped features low wear and maintenance-free.



## Outline Dimensions



## MAIN SPECIFICATIONS

Description	Specification	Unit
Rated operating load	11000	kg
Bucket capacity	5.5-6.1	m <sup>3</sup>
Machine weight	34000-35000	kg
Dump clearance at maximum lift	3450	mm
Reach at maximum lift	1494	mm
Wheel base	3700	mm
Tread	2450	mm
Max.breakout force	290	kN
Hydraulic cycle time-raise	6.6	s
Total hydraulic cycle time	11.9	s
Min. turning radius over tyres	6306	mm
Articulation angle	40	°
Gradeability	25	°
Tyre size	29.5R25	
Overall machine dimension L×W×H	10139×3639×3950	mm
Model	QSX15	
Rated Power/Speed	291/2000	kW/rpm
Travel speed	I -gear(F/R)	6.2/6.2
	II -gear(F/R)	11.5/11.5
	III -gear(F/R)	17.5/24.8
	IV -gear(F/R)	35.7/-

No further information of sample contents, product structure and configuration parameters updates. There maybe some difference between sample books and material objects.Please kind prevail.



Machmall.com is an electromechanical product platform officially launched by XCMG, aiming to provide global customers with a complete set of high-quality construction machinery solutions and supporting equipment.

Xuzhou Construction Machinery Group Co., Ltd. (XCMG Group), founded in 1943, is the fourth largest worldwide construction machinery manufacturer and the largest in China with products covering 183 countries and regions.

XCMG have 12 complete solutions: Crane lifting, Mining Construction, Earth-moving Solutions, Road Machinery, Concrete Equipment, Tunnel and Underground Space Construction, Mobile Elevating Work Platform (MEWP), Piling and Non-excavation Equipment, Transportation Equipment, Environmental Sanitation Equipment, Firefighting, Safety and Emergency Rescue

徐工徐工，助您成功

— XCMG for your success —

